

CELEBRETTO®

ALLURE



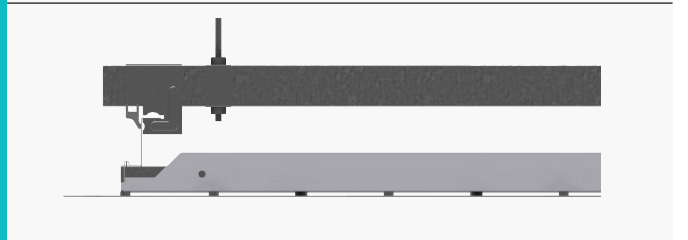
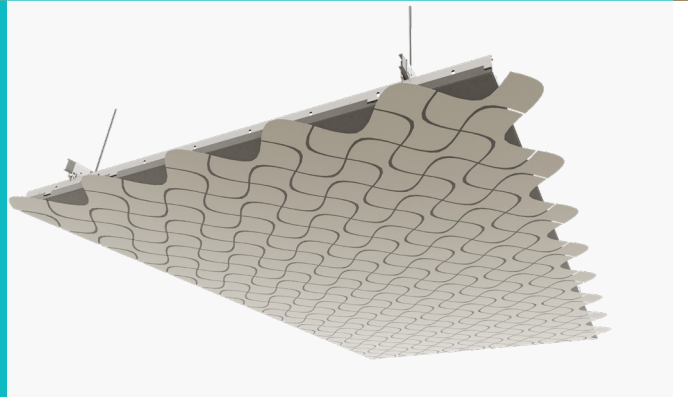
FEATURES AND BENEFITS

- Allure is a distinctive ceiling solution that unlocks innovative design capabilities like multi-layered solutions, impressive curvilinear designs, and multicolored options.
- Fashion your ceiling design into organic, complicated, and uninterrupted shapes that lie beyond the scope of any preconfigured architectural pattern and imprint it across your space.
- Scalable and seamless panel solutions.
- Growing range of patterns or customizable unique designs.

APPLICATIONS

- Hotel lobbies
- Restaurants
- Commercial spaces
- Offices
- Lounges
- Open halls
- Reception
- Corridors

ALLURE DRAWINGS



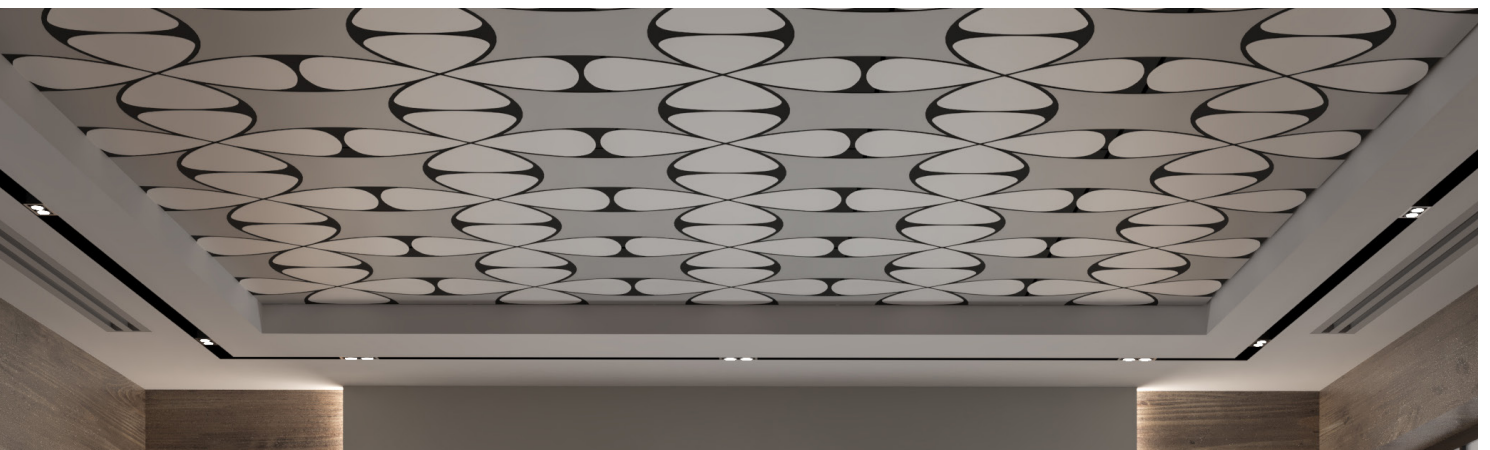
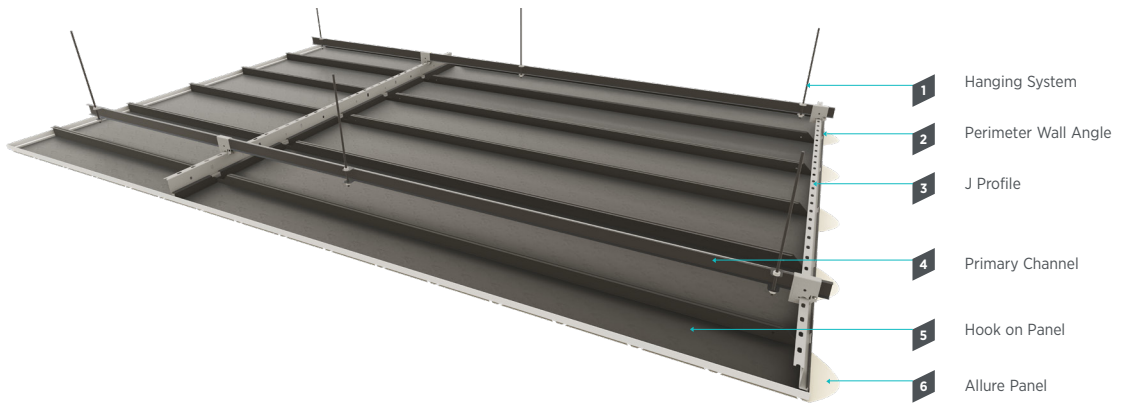
AVAILABLE FINISHES



Explore our complete range of options in **CELEBRETTO® Colors, Finishes and Perforations Pattern** catalogue for detailed insights.



ALLURE SYSTEM DRAWINGS



SYSTEM SPECIFICATION

Material Classification

Galvanized Steel: Type V

Stainless Steel: Type VI

Pattern: A, C, G

Thickness

Powder coat finish: 0.6mm – 1.4mm

Wooden finish: 0.6mm

Hook-On Panel Height

40mm to 200mm

Panel Width

Up to 1200mm

Panel Length

Up to 2400mm

Color

Standard: RAL 9016, RAL 9006 and RAL 9010.

Other RAL colors are available upon request.

Wooden patterns are available upon request

Light Reflectance Coefficient [LR]

Based on the finish color and

perforation pattern, LR up to 0.82

Surface Burning Characteristics per ASTM E 84

Class A

Additional Information

- Thickness depends on panel sizes and project requirements
- Consult USG Middle East technical team for other panel widths



ALLURE CEILING ACOUSTICAL PERFORMANCE

USG Middle East supplies metal ceiling panels with a range of acoustical performance to meet the needs of all kinds of projects. A variety of sound-absorbing backing options are available. Consult with the USG Middle East technical team for further guidance.

ITEM CODIFICATION

S: Steel
SS: Stainless Steel

ALR: Allure

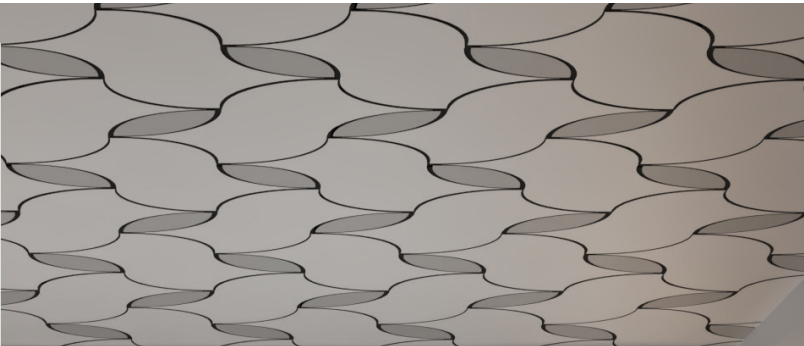
600: First Dimension

1200: Second Dimension

7: Material Thickness (0.7mm thickness)

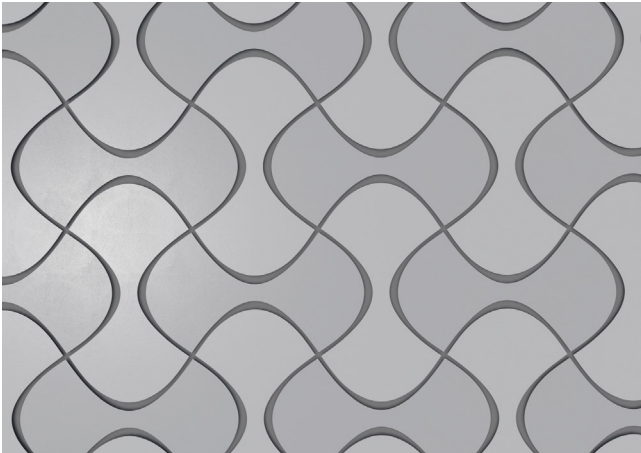
R1035: RAL 1035 powder coated finish

SALR-60012007R1035



SYSTEMS CONFIGURATIONS*

LATCH



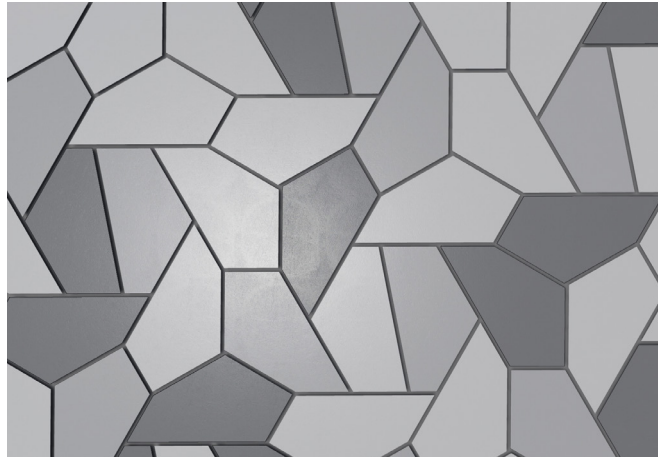
PANEL TYPES



LATCH Panel A

Panel Width: 600 mm
Panel Length: 1000mm

BLOSSOM



PANEL TYPES



BLOSSOM Panel A

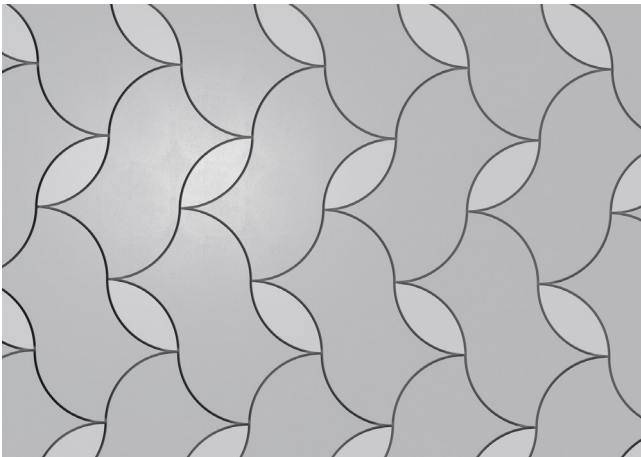
Panel Width: 450 mm
Panel Length: 650mm



BLOSSOM Panel B

Panel Width: 400 mm
Panel Length: 800mm

BRAID



PANEL TYPES



BRAID Panel A

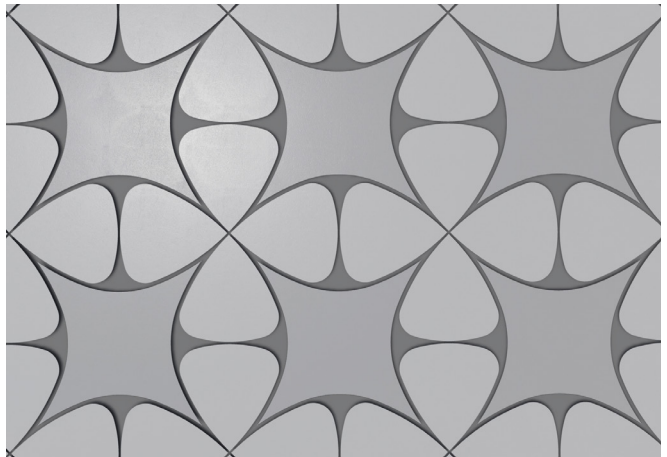
Panel Width: 900 mm
Panel Length: 1100mm



BRAID Panel B

Panel Width: 350 mm
Panel Length: 400mm

HARMONY



PANEL TYPES



HARMONY Panel A

Panel Width: 750 mm
Panel Length: 750mm



HARMONY Panel B

Panel Width: 450 mm
Panel Length: 500 mm

* All dimensions are customizable to fit the client's requirements.