

**MADA** ■  
**GYPSUM**

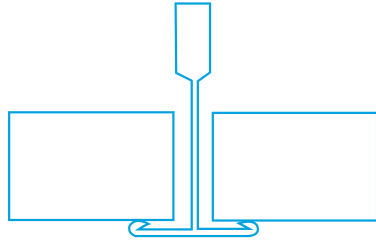
# CEILING TILES SUSPENSION SYSTEM



# CEILING TILES SYSTEM

Mada PVC Facing Ceiling Tiles are manufactured from high quality natural gypsum boards cut to size, laminated PVC facing and backed by a PET metalized foil. They are available in various attractive designs suitable for different applications and usages.

# FIELD OF APPLICATION



Mada PVC Facing Ceiling Tiles are used with exposed Mada T-Grid Suspension System in residential and commercial buildings. They are ideal for humid areas.





## MANUFACTURING STANDARDS

Mada PVC Facing Ceiling Tiles are designed and produced to ASTM C1396 / C1396M, EN 520 Type A & EN 14190 standards.

# PROPERTIES



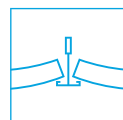
Washable



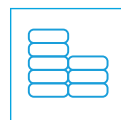
Easy to Install



Durable



Sag  
resistance



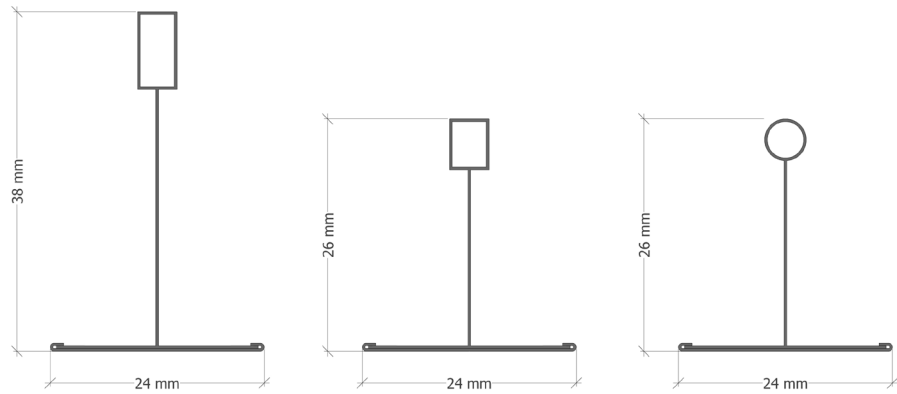
Economical



Moisture  
resistant

Technical information	Applicable standard	Tile Thickness		
		8mm	9mm	12.5mm
Weight (kg/m <sup>2</sup> )	±0.2	6.0	6.2	7.2
Board Density (kg/m <sup>3</sup> )	Minimum	750	653	576
Material	-	Moisture Resistant Ceiling tiles		
Faceside Material	-	High Quality PVC		
Backside Material	-	High Quality PET metalized foil		
Available Size, mm	-	595x595 / 603x603		
Available Pattern	-	154 / 238 / 239		
Flexural Strength (N)	ASTM C1396	≥ 279	≥ 343	≥ 476
(Longitudinal)	EN 520	≥ 344	≥ 400	≥ 550
Flexural Strength (N)	ASTM C1396	≥ 94	≥ 116	≥ 157
(Transverse)	EN 520	≥ 134	≥ 160	≥ 210
Nail Pull Resistance (N)	ASTM C1396	≥ 225	≥ 249	N/A
Asbestos (% by weight)	-	No asbestos fibers detected		
CAC	-	35		
Light Reflection	-	0.75 (standard for white PVC facing)		
Chemical & Microbial	-	Excellent resistance		
Humidity resistance	-	Up to 90% relative humidity (RH) at a Max of 30°C.		

# MADA T GRID SUSPENSION SYSTEM



## Application

- Residential buildings.
- Commercial buildings.
- Hospitals.
- Airports.
- Educational settings.
- Light industrial and manufacturing projects.

## Benefits

- Minimum G30 Hot Dip Galvanized body to provide protection against corrosion
- Supports heavy tiles and backings, as well as Light Fixtures and Access Panels

Description	Width	Profile Height	Length	Color	Thickness
T Grid Cross Tee	24mm	26mm	600mm	White RAL 9010	0.30 mm
T Grid Long Tee	24mm	26mm	1200mm	White RAL 9010	0.30 mm
T Grid Main Tee	24mm	38mm	3600mm	White RAL 9010	0.30 mm
T Grid Wall Angle	25mm	25mm	3000mm	White RAL 9010	0.4 mm

Suspension System	Parameters
Yield Strength	300 Mpa
Tensile Strength	370 Mpa
Hardness (HRB)	60 - 65
Zinc Coating	Z60

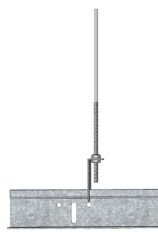
# MADA T GRID SUSPENSION SYSTEM

## Suspension Options

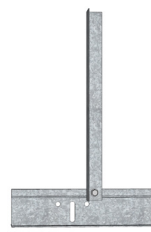
Adjustable Hanger



Threaded Rod



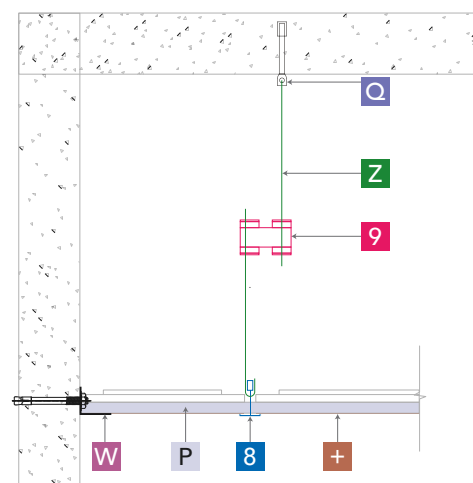
Hanging Bracket



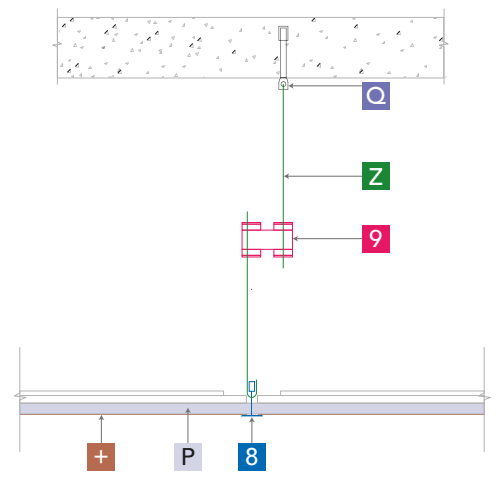
Suspension Wire



## Perimeter Detail

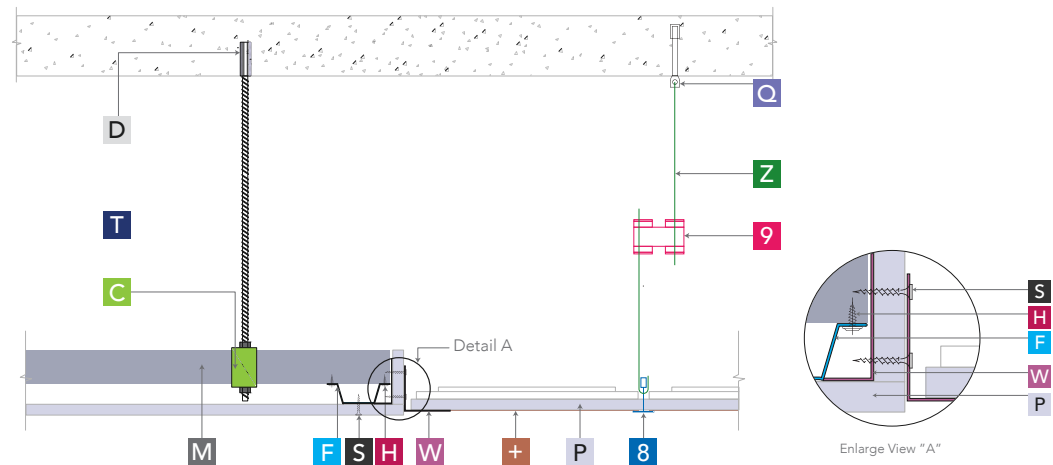


## Soffit Fixation



- H** Mada Wafer Head Screw
- S** Mada Drywall Screw
- T** Mada Threaded Rod
- 8** Main Tee
- P** Mada Plus Plasterboard
- W** Mada Wall Angle
- Q** Mada Wire Anchor
- +** Cross Tee
- M** Mada Main Channel
- F** Mada Furring Channel
- Z** Mada Wire Hanger
- D** Mada Drop In Anchor
- C** Mada C-Clip
- 9** Mada Adjustable Clip

## Grid to MF Transition Detail



# MADA T GRID

## SUSPENSION SYSTEM

### Limitations

For Interior use only

### Material Storage and Handling

Metal products are available in both pack and sub-pack quantities and should be handled in accordance with the recommendations contained in Local Health and Safety at Work Principles and Practices.

Use only properly trained and licensed operators when for mechanical lifting or movement. Store metal products away from airborne contaminants such as acid or salt spray in an environmentally friendly area.

Always wash hands for personal hygiene and before eating/drinking. Those with sensitive skin conditions should seek medical advice before prolonged handling of metal products.

When cutting metal profiles, always wear non-fogging goggles for maximum eye protection. Consult the Mada System Guide for additional information about related systems and installations.

Refer to Mada Safety Data Sheet for additional guidance with health and safety, storage, and handling.

### General Notes

This product should not be used for purposes other than those shown on the Mada Technical Proposal.

Our System Performance Warranty applies only to systems made up entirely of Mada System components.

As products are improved, Mada Gypsum Company may amend this information as needed, without prior notice. Please refer to [www.madagypsum.com](http://www.madagypsum.com) for the latest information.



# CEILING SYSTEM ACCESSORIES



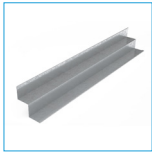
## Mada UDZ Wedge Anchor

The UDZ Wedge Anchor combines the principle of a bolt anchor with that of a simple hammer-set anchor, where no tightening torque is required. The anchor expands automatically under the load of the application and pulls the cone into the expansion sleeve.



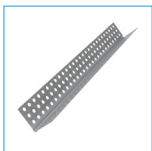
## Mada C-Clamp

C-Clamp is designed to hold the primary ceiling channel to soffit by means of a threaded rod.



## Mada W Angles

Mada W Angles are cold-roll formed profiles made from pre-painted corrosion resistant hotdipped galvanized steel and conforming to ASTM A-653.



## Mada Corner Bead (External)

The Corner Beads (External) are ideal for a quick and easy finishing for your external corners.



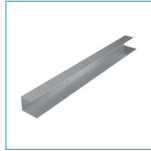
## Mada Shadow Gap

Mada Shadow Gap Angles are cold-roll formed profiles made from pre-painted corrosion resistant hotdipped galvanized steel and conforming to ASTM A-653.



## Mada M-50 Shadow Gap

Mada M-50 Shadow Gap Angles are cold-roll formed profiles made from pre-painted corrosion resistant hotdipped galvanized steel and conforming to ASTM A-653.



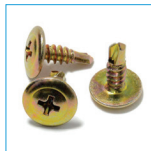
## Mada Furring Track

Mada Furring Track fabricated from Hot-Dipped Galvanized steel coils conforming to STM 653 and thru Cold rolled process, used at the floor for cladding and around perimeter of ceiling to support the Furring Channel.



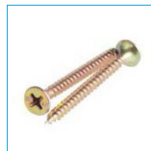
## Mada PLUS Drop-in Anchor

Drop-In-Anchors are an all-steel, medium duty expansion anchor designed to provide a permanent anchorage point in concrete substrates. An internal thread allows for use with both machine bolts and threaded rod, with no restrictions on fixture thickness.



## Mada Wafer Head Self Drilling Screw

Mada Wafer Head Self Drilling screws with a head diameter of 11mm are designed for assembling steel framing components for up to 3.0mm thick.



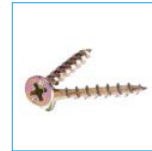
## Mada Self Tapping Screw

Mada Self Tapping bugle head screws is the ability of the screw to advance while creating its own thread. It is used for fastening drywall and other accessories mounting on steel structures below 0.8mm thick.



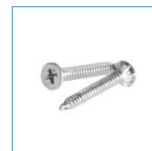
## Mada Self Drilling Screw

Mada Self Drilling bugle head screws also known as Tek screws, eradicate the need for a pre-drilled hole and allow drilling and tie to be done in the same motion. It is used for fastening drywall and other accessories mounting on steel structures from 0.90mm up to 3.0mm thick.



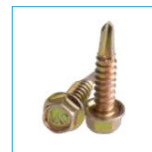
## Mada Laminating Self Tapping Screw

Laminating bugle head screws are designed to temporarily attach Mada plasterboard to plasterboard when gluing or laminating. This screw features a coarse thread design and great holding power.



## Mada Procem Self Drilling Screw

Mada Procem Self Drilling screw with ribs under head has the ability to advance while creating its own thread and also drills for seating of screw head. It is used for fastening Mada Procem cement board and other accessories mounting on steel structures up to 1.20mm thick.



## Mada Hex Head Self Drilling Screw

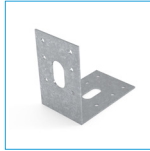
Mada Hex Head Self Drilling screws are used to fasten metal to metal or metal and other accessories from 0.8mm up to 3.0mm thick. It has very good tensile strength. High-torque hex head for fast framing and metal work.

# CEILING SYSTEM ACCESSORIES



## Mada Hex Washer Head Self Drilling Screw

Hex washer head self drilling screws are used to fasten metal to metal or metal and other accessories from 0.8mm up to 3.0mm thick. It has very good tensile strength. High-torque hex head for fast framing and metal work.



## Mada Suspension L-Bracket

Mada specially design L-bracket is typically used as suspension bracket. The rigid structure in the shape of an L, one arm fixed to a vertical (suspension) surface, the other fixed to the support such as ceiling, slab, etc.



## Mada Metal Corner Tape

Mada Paper Faced Metal Corner Tape is made up of strong paper tape reinforced with two parallel corrosion resistant metal strips. They are ideally used for protection of Internal and External corners, Archways and unusual angles.



## Mada Adjustable Furring Channel Clip

Mada Adjustable Furring Channel Clips are used to provide adjustment for masonry walls, CMU, block wall & ceiling. This eliminates the need for packers and extra fasteners & more accurate installation. Once the clip is securely fastened onto the wall or ceiling, the furring channel can be snapped in without the need of any extra fasteners. This clip can accommodate 75mm & 85mm furring channel.



## Glasswool Insulation

An insulating material consisting of fine, long, inorganic fibers bonded together by a high-temperature binder. Excellent acoustic properties, lightweight, high-tensile strength, with exceptional resilience.



## Mada Control Joint (Expansion Joint)

Mada Control Joint has a specially designed PVC rubber flexible joint which locks onto two galvanized setting beads. A protective filament tape is attached to the flexible joint section to keep it clean when applying the setting compound, and is removed on completion.



## Mada Slotted L-Bracket

Mada specially design L-bracket is typically used to transfer loads in external wall/heavy load attachment/high rise partition where deflection allowance is needed. The rigid structure in the shape of an L, one arm fixed to a vertical (Stud) surface, the other fixed to the support such as Wall, Ceiling, Slab, etc.



## Mada Fiber Joint Tape

Mada Fiber Joint Tape is composed of twisted strands of fiber glass woven at right angles to one another and used for reinforcing drywall joints. Suitable for hand or mechanical application with Mada Gypsum's Jointing Compound.



## Mada Backing Rod

Mada Backing Rod is a round foam rod primarily used as a backing strip for expansion joints or as a gap filler for any open joints so caulking can be applied to finish filling the void and create an airtight and water-tight seal.



## Mada Paper Joint Tape

Mada Paper Joint Tape is non-elastic and will create stronger joints. The Paper joint tape must be completely saturated and embedded into the base coat to avoid air bubbles. It is suitable for hand or mechanical application with Mada's jointing compound.



## Mada Access Panel

Mada Access panels are gypsum based built in accessories for Mada Plus drywall systems. Mada Access Panels are great for allowing access to service areas for plumbing, electrical, security systems, telephone, computer cables, sprinkler systems and more.

# Ceiling Tiles System

Head Office: P.O.Box 31542, Yanbu Al Sinayah 51000 Kingdom of Saudi Arabia  
Tel.: + 966 14 325 3253 | Fax: + 966 14 325 0420